

# THE SAN FRANCISCO YACHT CLUB



## 2019 CLUB CHAMPIONSHIP SERIES

Wine and beer sponsored by:



# FORT POINT

## SAILING INSTRUCTIONS

**Organizing Authority: The San Francisco Yacht Club, Belvedere, California**

### 1 RULES

- 1.1 The series will be governed by the rules as defined in *The Racing Rules of Sailing* (RRS).
- 1.2 Rule 40 is changed as follows: All competitors shall wear personal flotation devices while racing, except briefly while changing or adjusting clothing or personal equipment. Flag Y will not be displayed.
- 1.3 The US Sailing prescription to rule 63.2 shall not apply.
- 1.4 All boats shall fly The San Francisco Yacht Club burgee while racing. Breaches of this rule are not grounds for protest by a boat. Boats identified by the race committee not complying with this rule will receive, without a hearing, a five-minute scoring penalty. This changes rules 60.1, 63.1 and A5.

### 2 NOTICES TO COMPETITORS

Notices to competitors will be posted on the official notice board located outside on the west wall of the SFYC Clubhouse. The NOR, SIs, and amendments thereto will be posted online at [www.sfyc.org](http://www.sfyc.org).

### 3 CHANGES TO SAILING INSTRUCTIONS

- 3.1 Any change to the sailing instructions will be posted before 0900 on the day it will take effect, except that any change to the schedule of races will be posted by 1200 on the day before it will take effect.
- 3.2 Oral changes to the sailing instructions may be made on the water. The race committee will display code flag "L", hail boats and announce on VHF USA channel 65A of a change.

### 4 SCHEDULE OF RACES

- 4.1 The Club Championship Series consists of up to nine scheduled races.

<u>REGATTA</u>	<u>DAY AND DATE</u>	<u>RACES</u>	<u>FIRST WARNING</u>
1. Rosenblum	Saturday, March 23	2	1215 hours
2. Anniversary Cup*	Saturday, April 27	1*	1215 hours
3. Independence Cup	Saturday, June 22	2	1215 hours

4. Mitchell & Ross	Saturday, July 27	2	1200 hours
5. Wosser Cup	Saturday, September 21	2	1200 hours

\* The Staff Commodores' Cup will be sailed immediately after the Anniversary Cup. (See separate sailing instructions for the Staff Commodores' Cup.)

- 4.2 The warning signal for the second race will be made as soon as practicable after completion of the first race. To alert boats that another race will begin, the race committee may make a series of short sound signals and a radio announcement on VHF USA channel 65A.

## 5 CLASS FLAGS

- 5.1 The Division splits into fleets will be made by 1700 hours on Friday, March 22. They will be posted on the website and the official notice board.
- 5.2 Class flags will be the following numerical pennants:

<u>Fleet</u>	<u>Flag</u>
Non-Spinnaker 2	one
Spinnaker 1	two
Spinnaker 2	three
Non-Spinnaker 1	four
Multihull	five

## 6 RACING AREA

The intended racing area will be in the vicinity of the west side of Angel Island and the Central Bay.

## 7 THE COURSES AND MARKS

The courses and marks are described in Attachment A. The course to be sailed will be displayed by numeral placards on the race committee signal boat.

## 8 AREAS THAT ARE OBSTRUCTIONS

Boats shall not pass between the bell buoy off the west end of Alcatraz Island, or the Point Blunt buoy and the closest point ashore of each. These are obstructions.

## 9 THE START

- 9.1 The starting line will be between a staff or halyard displaying an orange flag on the race committee signal boat and a yellow inflatable mark.
- 9.2 The starting line will be offshore of Pt. Knox.
- 9.3 The warning signal for succeeding fleets will be made with or after the starting signal for the preceding fleet. Fleets may be started in any order, but it is expected that fleets will be stated in the order listed in SI 5.2.. Please monitor VHF USA channel 65A.

## 10 CHANGE OF THE NEXT LEG OF THE COURSE

To change the next leg of the course, the race committee will move the original mark (or finishing line) to a new position and signal this change in accordance with racing rule 33.

## 11 THE FINISH

- 11.1 The finishing line will be between a staff or halyard displaying an orange flag on a race committee boat and a red inflatable mark on the opposite side of the race committee boat from the starting line.
- 11.2 A boat that retires from a race shall notify the race committee as soon as possible. Notification by radio on VHF USA channel 65A is preferred.

## 12 TIME LIMITS

- 12.1 Boats not finishing within 40 minutes after the first boat in her fleet sails the course and finishes will be scored Did Not Finish without a hearing. This changes rules 35, A4, and A5.
- 12.2 The time limit for each race day will be 1700 hours. Boats finishing after the time limit will be scored DNF. This changes rules 35, A4 and A5.
- 12.3 No races will be started after 1530 hours.

### **13 PROTESTS AND REQUESTS FOR REDRESS**

- 13.1 Protests and requests for redress shall be delivered to the Club front desk. Protest forms will be available there. This changes rules 61.3 and 62.2.
- 13.2 The protest time limit is 60 minutes after the race committee signal boat docks. The time limit will be posted on the official notice board.
- 13.3 Notices will be posted on the official notice board within 30 minutes of the protest time limit to inform competitors of hearings in which they are parties.
- 13.4 Hearings will be held at 1900 hours in the Eldridge Room of the Sailing Center on the Tuesday following the regatta, unless rescheduled by the Chief Judge.
- 13.5 A request to reopen a hearing shall be delivered to the Club Race Office within 24 hours of being informed of the protest committee decision. Requests may be made by email. The Race Office email address is [race@sfyc.org](mailto:race@sfyc.org). This changes rule 66.

### **14 SCORING**

- 14.1 Scoring for each race will be NCPHRF or MPHRF Time-on-Time calculated with the formula  $TCF=A/(B+rating)$ , where TCF is the time correction factor that the rating is multiplied by, and  $A=B+(fleet's\ middle\ rating)$ . The B Factor used will be as follows for the average of the wind speeds observed on the signal boat at the start and on the finish boat when the first boat in each division finishes:  
20+ knots = 500  
10-19 knots = 550  
Under 10 knots = 575
- 14.2 When fewer than 3 races have been completed, a boat's series score will be the total of her race scores.
- 14.3 When 3 to 5 races have been completed, a boat's series score will be the total of her race scores excluding her worst score.
- 14.4 When 6 or more races have been completed, a boat's series scores will be a total of her race scores excluding her two worst scores.

### **15 SAFETY REGULATIONS**

Boats shall not impede the passage of commercial vessels and shall comply with USCG Right-of-Way Navigation Rules. Boats must take evasive action well in advance of a potentially dangerous situation.

### **16 RADIO COMMUNICATION**

- 16.1 The race committee may use VHF USA channel 65A to communicate information about the races.
- 16.2 The race committee will attempt to hail boats observed OCS at the start. The failure of any boat to hear the hail, the hail of some but not all OCS boats, the untimely hail of some or all OCS boats, or failure to hail any or all boats shall not be grounds for redress. This changes rule 62.
- 16.3 Except in an emergency, or when retiring from a race, a boat that is racing shall not make voice or data transmissions and shall not receive voice or data communication that is not available to all boats.

### **17 PRIZES**

- 17.1 For each regatta, perpetual trophies will be awarded to the winners of each fleet in each Division, as

well as, keeper trophies for first and second place finishers of each fleet in each Division. The trophy presentations will be held on the Club deck after racing.

- 17.2 Family Challenge participants will receive a Waypoint Pizza gift card and Dry Creek Vineyards wine tasting gift cards. Please submit the attached form to the Race Office prior to each race day you would like to enter the Family Challenge.
- 17.3 The four overall Club Series fleet winners will be jointly awarded the King George V Perpetual Trophy. The award will be presented at Race Appreciation Night on November 9, 2019.

## **18 DISCLAIMER OF LIABILITY**

Competitors participate in the regatta entirely at their own risk. See rule 4, Decision to Race. The organizing authority will not accept any liability for material damage or personal injury or death, sustained in conjunction with, prior to, during or after the regatta.

## Attachment A

### 2019 CLUB CHAMPIONSHIP SERIES COURSES

<u>Course #</u>	<u>Description</u>	<u>Approx. Distance</u>
1	Start W1-P, L1-P Finish	TBD (2 to 3 nm)
2	Start W1-P, L1-P, W1-P, L1-P Finish	TBD (5 to 6 nm)
3	Start W1-P, R1-P, L1-P, W1-P, L1-P Finish	TBD (6 to 7 nm)
4	Start W1-P, 8-P, W1-P, L1-P Finish	TBD (9 to 10 nm)
5	Start 12-P, 17-P, L1-P, 12-P, L1-P Finish	TBD (4 to 5 nm)
6	Start 17-P, 18-P, L1-P, 17-S, L1-P Finish	TBD (8 to 9 nm)
7	Start 6-P, 12-P, 6-P Finish	TBD (9.8 nm)
8	Start 16-P, 12-P, 16-P, L1-P Finish	TBD (9.9 nm)
9	Start W1-P, 18-P, 24-P, W1-P, L1-P Finish	TBD (12 to 13 nm)
10	Start W1-P, 21-P, 8-P, W1-P, L1-P Finish	TBD (9 to 10 nm)

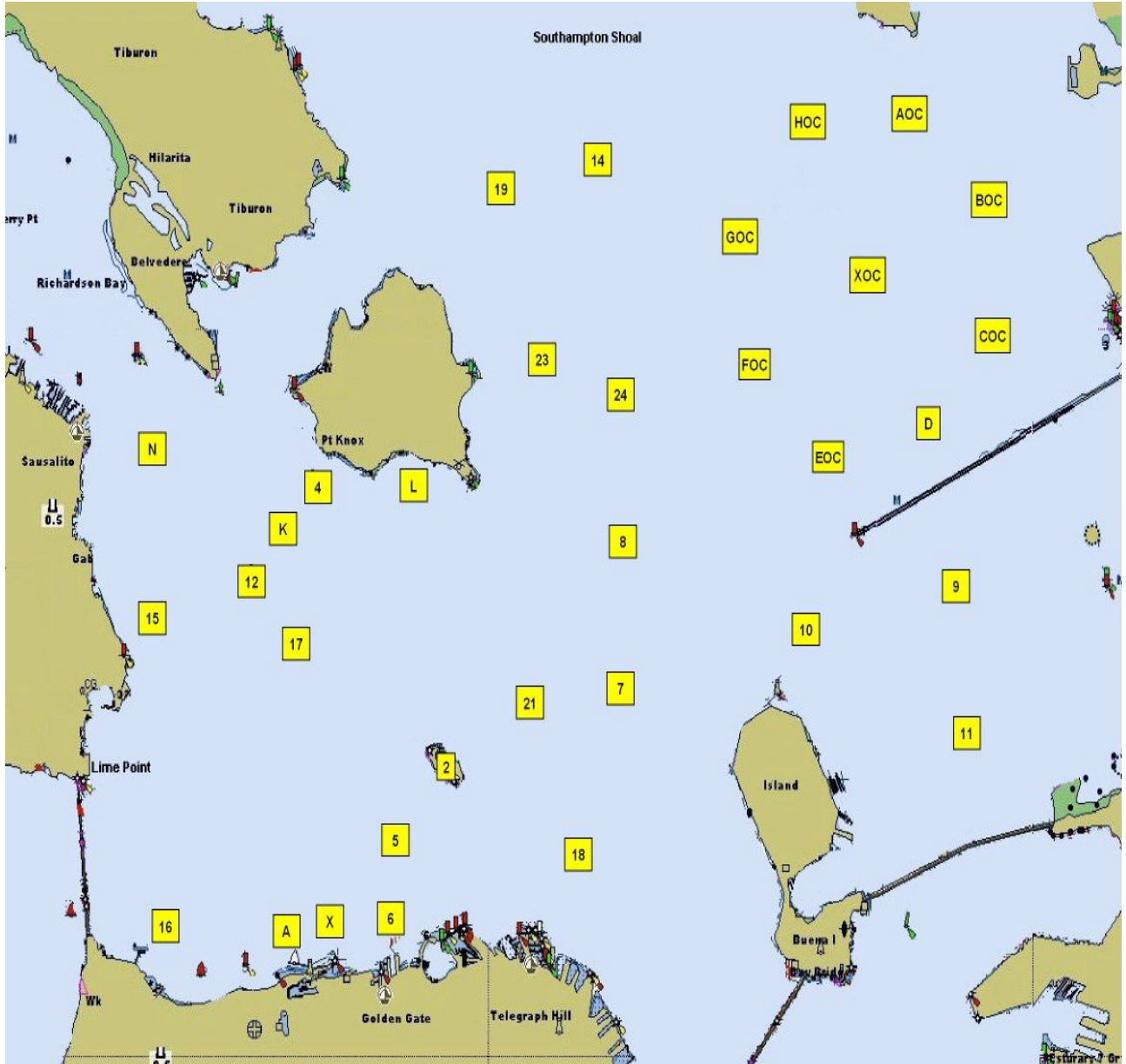
[‘P’ designates mark to be left to port. ‘S’ designates mark to be left to starboard.]

Marks: All marks are rounding marks except starting and finishing marks.

“Start”	Yellow SFYC Inflatable set as the starting line mark
“Finish”	Red SFYC Inflatable set as the finishing line mark
“W1”	Red SFYC inflatable set to windward of “S/F”
“L1”	Red SFYC inflatable set to leeward of “S/F”
“R1”	Red SFYC inflatable reaching mark
“6”	YRA Mark 6, Yellow Column ”M” 200 yards north of Fort Mason Docks
“8”	YRA Mark 8, R”4” Fl 4s Horn, 1.0 nm east of Point Blunt
“12”	YRA Mark 12, “ <b>Little Harding Rock</b> ” (G “1” Fl G)
“16”	YRA Mark 16, “ <b>Blackaller</b> ” (Yellow Column “C” 0.2 nm east of Fort Point)
“17”	YRA Mark 17, “ <b>Harding Rock</b> ” (RG “HR” Fl (2 + 1) R 6s)
“18”	YRA Mark 18, “ <b>Blossom Rock</b> ” (RG “BR” Fl (2+1) G 6s Bell)
“21”	YRA Mark 21, G”1” Fl G 6s, approx. 0.65 nm NE of Alcatraz
“24”	YRA Mark 24, R”6” Fl R 4s Bell, 1.1 nm east of Quarry Point

See YRA Mark Chart attached for the approximate location of YRA marks.

# YRA Mark Diagram



# CLUB CHAMPIONSHIP SERIES



## FAMILY CHALLENGE

Waypoint Pizza and Dry Creek Vineyards have generously donated gift cards for the Club Series and the Round the Island races. Prizes will be given to the boat that has the most young sailors under 25 years of age and the most experienced sailors over 75 years of age, for each regatta.

*Forms must be submitted before each regatta.*

Skipper's name: \_\_\_\_\_

Boat's name: \_\_\_\_\_

Please list your 25 and under and 75 and over crew-member's names and ages:

1. \_\_\_\_\_
2. \_\_\_\_\_
3. \_\_\_\_\_
4. \_\_\_\_\_
5. \_\_\_\_\_