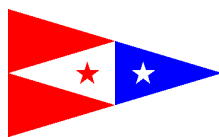


THE SAN FRANCISCO YACHT CLUB



98 BEACH ROAD, PO BOX 379, BELVEDERE, CALIFORNIA 94920 - RACE OFFICE 415-789-5647

2023 CLUB CHAMPIONSHIP SERIES

Wine sponsored by:



SAILING INSTRUCTIONS

(NOR attached at end of SIs)

Organizing Authority: The San Francisco Yacht Club, Belvedere, California

1 CHANGES TO SAILING INSTRUCTIONS

- 1.1 Any change to the sailing instructions will be posted before 0900 on the day it will take effect, except that any change to the schedule of races will be posted by 1600 on the day before it will take effect.
- 1.2 Oral changes to the sailing instructions may be made on the water. The race committee will display code flag "L", hail boats and announce the change on VHF USA channel 65A. Failure to hear this transmission shall not be grounds for redress.

2 COMMUNICATIONS WITH COMPETITORS

- 2.1 Notices to competitors, other than those related to hearings, will be posted on the official notice board located outside on the west wall of the SFYC Clubhouse.
- 2.2 The NOR, SIs, and amendments thereto will also be posted online at www.sfyc.org > On the Water > Regattas. The hearing schedule and related information will also be posted online.
- 2.3 Notices related to hearings will be posted on racingrulesofsailing.org as described in the Hearing section below.
- 2.4 The race committee will use VHF USA channel 65A to communicate information about the races.
- 2.5 Except in an emergency, or when retiring from a race, a boat that is racing shall not make voice or data transmissions and shall not receive voice or data communication that is not available to all boats.

3 SIGNALS MADE ASHORE

- 3.1 Signals made ashore will be displayed on the main flagpole on the SFYC lawn.
- 3.2 When flag AP is displayed ashore, '1 minute' is replaced with 'not less than 30 minutes' in Race Signals AP.

4 CLASS FLAGS

Class flags will be the following numerical pennants:

<u>Fleet</u>	<u>Flag</u>
Spinnaker	one
Non-Spinnaker	two

5 RACING AREA

The intended racing area will be in the vicinity of the west side of Angel Island and the Central Bay.

6 COURSES AND MARKS

The courses and marks are described in Attachment A. The course to be sailed will be displayed by numeral placards on the race committee signal boat.

7 OBSTRUCTIONS

Boats shall not pass between the bell buoy off the west end of Alcatraz Island, or the Point Blunt buoy, or the south tower of the Golden Gate Bridge, and the closest point ashore of each. These are obstructions.

8 THE START

- 8.1 The starting line will be offshore of Pt. Knox.
- 8.2 The starting line will be between a staff or halyard displaying an orange flag on the race committee signal boat and the course side of a yellow inflatable mark.
- 8.3 [DP] Boats whose warning signal has not been made shall avoid the starting area during the starting sequence for other races.
- 8.4 If any part of a boat's hull is on the course side of the starting line at her starting signal and she is identified, the race committee will attempt to hail her sail number. Failure to hail her number, failure of her to hear such a hail, or the order in which boats are hailed will not be grounds for a redress for request. This changes RRS62.1(a).
- 8.5 A boat that does not start within 4 minutes after her starting signal will be scored Did Not Start without a hearing. This changes RRS A5.1 and A5.2.
- 8.6 The warning signal for succeeding fleets will be made with or after the starting signal for the preceding fleet. Fleets may be started in any order, but it is expected that fleets will be started in the order listed in SI 4.

9 CHANGE OF THE NEXT LEG OF THE COURSE

To change the next leg of the course, the race committee will move the original mark (or finishing line) to a new position.

10 THE FINISH

- 10.1 The finishing line is between a staff or halyard displaying a blue flag on a race committee boat and the course side of a red inflatable mark on the opposite side of the race committee boat from the starting line.
- 10.2 A boat that retires from a race shall notify the race committee as soon as possible. Notification by radio on VHF USA channel 65A is preferred.

11 TIME LIMITS

- 11.1 Boats not finishing within 45 minutes after the first boat in her division sails the course and finishes will be scored Did Not Finish without a hearing. This changes rules 35, A4, and A5.
- 11.2 No race will be started after 1500 hours.

12 HEARING REQUESTS

- 12.1 The protest time limit is one hour after the race committee signal boat docks, as determined by the PRO. This time will be posted online and on the official notice board.

- 12.2 The notice board for hearing requests, such as protests, requests for redress, requests to reopen a hearing, and post race penalties shall be filed utilizing the platform listed below and will be posted and linked on the online Regatta page SFYC.org > On The Water > Club Series regattas https://www.racingrulesofsailing.org/protests/new?event_id=5682 This changes rule 62.2.
- 12.3 The hearing schedule will be posted on https://www.racingrulesofsailing.org/event_menus/5682_event_menu 30 minutes after the hearing time limit. All hearing-related notices will be posted on this platform.
- 12.4 Hearings will be held on Tuesday at 1800 hours on Zoom, following each regatta. A link to the Zoom video conference will be sent to the parties separately by email.
- 12.5 Parties and witnesses are expected to join the Zoom meeting hearing as scheduled. A (virtual) Zoom Waiting Room will be utilized until the hearing commences. The use of headsets if joining a hearing from a location where background noise cannot be controlled is advisable.
- 12.6 It is the sole responsibility of each boat involved to be ready and have witnesses available when the hearing is scheduled.
- 12.7 The protest committee decisions will be posted on the online notice board platform.
- 12.8 US Prescription to rules 63.1 and 63.2 shall not apply.

13 SAFETY REGULATIONS

[DP] Boats shall not impede the passage of commercial vessels and shall comply with USCG Right-of-Way Navigation Rules. Boats must take evasive action well in advance of a potentially dangerous situation.

Attachment A

STANDARD COURSES

<u>Course #</u>	<u>Description</u>			<u>Approx. Distance</u>
1	Start	W-P, L-P	Finish	TBD (2 to 3 nm)
2	Start	W-P, L-P, W-P, L-P	Finish	TBD (5 to 6 nm)
3	Start	15-P, L-P	Finish	TBD (2 to 3 nm)
4	Start	15-P, L-P, 15-P, L-P	Finish	TBD (5 to 6 nm)
5	Start	16-P, L-P	Finish	TBD (6 nm)
6	Start	W-P, 8-P, W-P, L-P	Finish	TBD (9 to 10 nm)
7	Start	15-P, 8-P, 15-P, L-P	Finish	TBD (9 to 10 nm)
8	Start	12-P, 17-P, L-P, 12-P, L-P	Finish	TBD (4 to 5 nm)
9	Start	17-P, 18-P, L-P, 17-S, L-P	Finish	TBD (8 to 9 nm)
10	Start	6-P, 12-P, 6-P	Finish	TBD (10 nm)
11	Start	16-P, 12-P, 16-P, L-P	Finish	TBD (10 nm)
12	Start	15-P, 18-P, 24-P, 15-P, L-P	Finish	TBD (12 to 13 nm)
13	Start	15-P, 19-P	Finish	TBD (8 nm)

PURSUIT RACE COURSES

<u>Course #</u>	<u>Description</u>			<u>Distance</u>
14	Start	16-P, 18-P, 8-P, 12-S	Finish	10.5 nm
15	Start	12-P, XOC-P	Finish	10.5 nm
16	Start	12-P, 8-P, SH-P, 15-P	Finish	10.5 nm

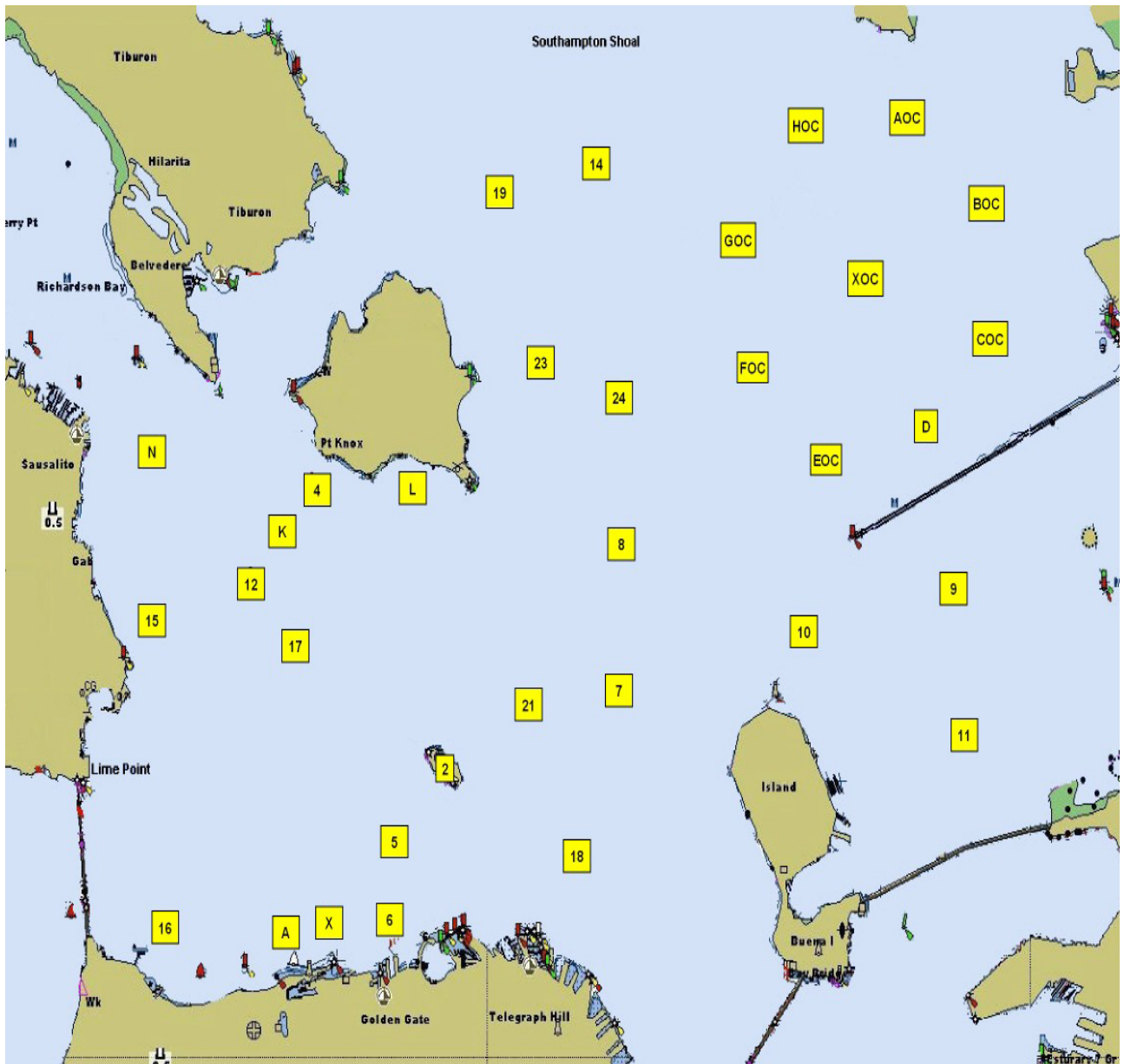
[‘P’ designates mark to be left to port. ‘S’ designates mark to be left to starboard.]

Marks: All marks are rounding marks except the starting and finishing marks.

“Start”	Yellow SFYC Inflatable set as the starting line mark
“Finish”	Red SFYC inflatable set as the finishing line mark
“W”	Red SFYC inflatable set 0.75-1 nm to windward of “S/F”
“L”	Red SFYC inflatable set to leeward of “S/F”
“SH”	Yellow Column 200 yard north of Southampton Shoals platform or yellow SFYC inflatable replacement
“XOC”	YRA Yellow Column - center of Berkeley Olympic Circle
“6”	YRA Mark 6, Yellow Column “M” 200 yards north of Fort Mason Docks or yellow SFYC inflatable replacement
“8”	YRA Mark 8, R”4” Fl 4s Horn, 1.0 nm east of Point Blunt
“12”	YRA Mark 12, “ Little Harding Rock ” (G “1” Fl G)
“15”	YRA Mark 15, “ Hank Easom ” (Yellow Column “YB” approx. 0.5 nm East of Yellow Bluff (Sausalito vicinity))
“16”	YRA Mark 16, “ Blackaller ” (Yellow Column “C” 0.2 nm E of Fort Point)
“17”	YRA Mark 17, “ Harding Rock ” (RG “HR” Fl (2 + 1) R 6s)
“18”	YRA Mark 18, “ Blossom Rock ” (RG “BR” Fl (2+1) G 6s Bell)
“19”	YRA Mark 19, R”8” Fl R2.5s (approx. 1.5 nm E of Point Bluff)
“24”	YRA Mark 24, R”6” Fl R 4s Bell, 1.1 nm E of Quarry Point

See YRA Mark Chart attached for the approximate location of YRA marks.

YRA Mark Diagram



----- end of sailing instructions -----

NOTICE OF RACE

NOR 6 was amended on 3/8/2023 and included below.

Organizing Authority: The San Francisco Yacht Club, Belvedere, California

1 RULES

- 1.1 The regatta will be governed by the rules as defined in *The Racing Rules of Sailing* (RRS).
- 1.2 Rule 40.1 will apply at all times when boats are in the racing area.
- 1.3 The US Sailing prescriptions to rules 63.1 and 63.2 shall not apply.
- 1.4 The sailing instructions may change additional racing rules.

2 SAILING INSTRUCTIONS

The sailing instructions and any amendments will be available at website www.sfyc.org, by the Wednesday evening preceding the first day of racing.

3 COMMUNICATION

- 3.1 The official notice board is located on the west wall of the SFYC clubhouse. Notices will also be posted online at www.sfyc.org. Hearing notices will be posted on a separate online platform, with links in the sailing instructions. Hearings will be held on Tuesday at 1800 hours on Zoom, following each regatta, or as scheduled by the chief judge.
- 3.2 On the water the race committee will make courtesy broadcasts to competitors on VHF radio channel USA 65A.
- 3.3 From the first warning signal until the end of the last race of the day, except in an emergency, or when retiring from a race, a boat that is racing shall not make voice or data transmissions and shall not receive voice or data communication that is not available to all boats.

4 ELIGIBILITY AND ENTRY

- 4.1 Eligible boats may enter by completing the online registration found at www.sfyc.org > On the Water > Regattas.
- 4.2 All boats must be at least 18 feet in length.
- 4.3 **Current Northern California PHRF certificates are required**, except for boats in classes with established NCPHRF one-design ratings, which will be assigned that base rating. NCPHRF certificates may be obtained through the YRA at <http://yra.org/northern-california-phrf/obtain-an-ncphrf-certificate/>. NCPHRF's Part 1 RULES AND GUIDELINES FOR HANDICAPPING suggestion on rating modifications for non-spinnaker fleets will not be in effect and all boats racing in non-spinnaker fleets shall be scored with their assigned NCPHRF certificate rating, or the one-design class base rating, if applicable. Please contact the Race Office if you have any questions or require assistance on how to obtain a certificate. Boats that do not have a current certificate or meet the one-design rating criteria will not be scored.
- 4.4 Both the skipper and the helmsmen are required to be SFYC Members or spouses of Members. Multiple skippers/helmsmen are permitted.
- 4.5 The Spinnaker Division includes boats designed and rated with spinnakers and which will be sailed with spinnakers during the series. The Spinnaker Division also includes boats designed and rated without spinnakers, such as the Knarr and Bird classes, and all other classes listed as "No NonSpin" in the NCPHRF Base Rating Report available on the YRA website.
- 4.6 The Non-Spinnaker Division includes boats who choose to race without spinnakers during the series, and are not listed as "No NonSpin" above.
- 4.7 The Spinnaker and Non-Spinnaker Divisions may be split into two fleets if more than 15 boats are registered in each respective division prior to the first race of the series.

- 4.8 For the pursuit races all boats will be started from highest to lowest PHRF rating in order, regardless of registered Division. Start times will be posted online by 1600 hours on the day preceding the race.
- 4.9 Entries will not be accepted after 0800 hours on each race day. Late entries to pursuit races will be posted online at this time.

5 FEES

There is no entry fee.

6 RACE SCHEDULE

The Club Championship Series consists of nine scheduled races. Two races will be 10-mile pursuit races, as noted below.

<u>REGATTA</u>	<u>DAY AND DATE</u>	<u>RACE STYLE</u>	<u>RACES</u>	<u>FIRST WARNING</u>
Rosenblum Regatta	Saturday, March 18	Standard	2	1200 hours
Anniversary Cup	Saturday, April 29	Pursuit	1	1055 hours
Hank Easom Regatta	Saturday, June 24	Standard	2	1100 hours
Mitchell Regatta	Saturday, July 22	Pursuit	1	1055 hours
& Ross Regatta finish		Standard	1	After Pursuit
Wosser Cup	Saturday, September 9	Standard	2	1200 hours

7 VENUE

The racing area will be in the vicinity of the west side of Angel Island, and the Central Bay. The start and finish will be offshore of Pt. Knox.

8 COURSES

Courses may use dropped and fixed marks listed in the YRA mark list for the Central Bay, which will be included in the sailing instructions.

9 SCORING

- 9.1 Scoring for standard races will be NCPHRF Time-on-Time calculated with the formula $TCF=A/(B+rating)$, where TCF is the time correction factor that the rating is multiplied by, and $A=B+(Fleet's\ middle\ rating)$. The B Factor used will be as follows for the average of the wind speeds observed on the signal boat at the start and on the finish boat when the first boat in each division finishes:
- 20+ knots = 500
 - 10-19 knots = 550
 - Under 10 knots = 575
- 9.2 Scoring for pursuit races will be determined by the order that the boats finish, within each Division.
- 9.3 For each Regatta: A boat's series score shall be the total of her race scores.
- 9.4 For the entire Club Championship Series: 4 races are required to be completed to constitute the Club Championship Series. When fewer than 3 races have been completed, a boat's series score will be the total of her race scores. When from 3 to 4 races have been completed, a boat's series score will be the total of her race scores excluding her worst score. When from 5 to 6 races have been completed, a boat's series score will be the total of her race scores excluding her 2 worst scores. When from 7 to 8 races have been completed, a boat's series score will be the total of her race scores excluding her 3 worst scores. When 9 races have been completed, a boat's series score will be the total of her race scores excluding her 4 worst scores.

10 RISK STATEMENT

Competitors participate in the event entirely at their own risk and subject to the terms and conditions of the SFYC liability waiver.

RRS 3 states: 'The responsibility for a boat's decision to participate in a race or to continue to race is hers alone.' By participating in this event each competitor agrees and acknowledges that sailing is a potentially dangerous activity with inherent risks. These risks include strong winds and rough seas, sudden changes in weather, failure of equipment, boat handling errors, poor seamanship by other boats, loss of balance on an unstable platform and fatigue resulting in increased risk of injury. **Inherent in the sport of sailing is the risk of permanent, catastrophic injury or death by drowning, trauma, hypothermia or other causes.**

11 INSURANCE

Each participating boat shall be insured with valid third-party liability insurance with a minimum cover of \$100,000 per incident or the equivalent.

12 PRIZES

- 12.1 For each Regatta, perpetual trophies will be awarded to the winners of each division or fleet, as well as keeper trophies for first and second place finishers of each division or fleet. The trophy presentations for each regatta will be held on the Club deck after racing.
- 12.2 Each overall Club Series division or fleet winner will be awarded the King George V Perpetual Trophy jointly at the end of the series.

13 FURTHER INFORMATION

SFYC Race Office – race@sfyc.org (415) 789-5647

--- End of NOR ---

SOCIAL EVENTS AND SPECIAL CLUB RULES

- After the racing beer, wine and light snacks will be served for competitors at the Cove House.
- All competitors must abide by all of the regular and special Club rules in effect, while on Club property (ie: docks, parking lot, clubhouse/deck, etc).
- Guest Crew: guest privileges are available to non-members participating in a Club hosted Regatta, and to allow competitors as guests, without a member, who have been posted and received guest cards.